

MONTHLY STATEMENT

Month Ending DECEMBER 31, 20 03

Municipality of VILLAGE OF BEISEKER

| | General Account | | 2002 | | FUNDS COMPARISON | | TOTAL | |
|--------------------------------------|-----------------|----|---------|----|------------------|----|-------|--|
| | | | | | | | | |
| Net Balance at End of Previous Month | 617,489 | 75 | 474,596 | 38 | RESERVE | | | |
| Receipts for the Month (Less Loans) | 112,362 | 58 | 187,040 | 19 | FUNDS | | | |
| | | | | | 189,191 | 48 | | |
| Sub-Total | 729,852 | 33 | 661,636 | 57 | | | | |
| LESS:- | | | | | OPERATING FUNDS | | | |
| Disbursements for the Month | 154,275 | 59 | 198,943 | 57 | | | | |
| | | | | | 386,385 | 26 | | |
| Net Balance at End of Month | 575,576 | 74 | 462,693 | 00 | | | | |
| Balance at End of Month — Bank | 590,029 | 72 | 546,100 | 24 | | | | |
| O/S DEPOSITS | 1,938 | 70 | 6,610 | 73 | | | | |
| * Cash on Hand at End of Month | 200 | 00 | 150 | 00 | | | | |
| Sub-Total | 592,168 | 42 | 552,860 | 97 | | | | |
| Less Outstanding Cheques | 16,591 | 68 | 90,167 | 97 | | | | |
| Net Balance at End of Month | 575,576 | 74 | 462,693 | 00 | | | | |

| OUTSTANDING CHEQUES | | | | | | OUTSTANDING ACCOUNTS PAYABLE | | | |
|---------------------|--------|-----|--------|-----|--------|---|--------------|--|--|
| No. | Amount | No. | Amount | No. | Amount | | Amount | | |
| SEE LIST ATTACHED | | | | | | | | | |
| | | | | | | | | | |
| | | | | | | | | | |
| | | | | | | | | | |
| | | | | | | | | | |
| | | | | | | | | | |
| | | | | | | | | | |
| | | | | | | | | | |
| | | | | | | Estimate of Accounts Payable, not rendered | | | |
| TOTAL | | | | | | | TOTAL | | |

This Statement Submitted to Council this 12TH day of JANUARY 20 04

Remarks:

[Signature]
.....
Deputy Mayor

[Signature]
.....
Sec.-Treas.

* Cash on Hand Deposited 20

(SEE OVER FOR EXPENDITURE CONTROL)

**VILLAGE OF BEISEKER
OUTSTANDING DEBENTURES 2003
AS AT DECEMBER 31, 2003**

| DATE/ BYLAW NUMBERS MATURITY DATE | (ORIGINAL AMOUNT)/ BALANCE FORWARD FROM 2002 | PROJECT AMOUNT PAID IN 2003 (PRINCIPAL & INTEREST) | NUMBER DATE RATE | (2003 PRINCIPAL PAYMENT) | DEBENTURE BALANCE |
|--|--|---|--|--|-----------------------|
| JUNE 1 78-27, 79-8 80-4, 80-5 80-19 6/1/2005 | (\$272,000.00) \$54,103.39 | WMR & RESERVOIR \$19,687.62 LIFT STATION \$2838.26 | 1146265 June 1/05 12.5% | \$14,013.25 \$2,020.22 TOTAL | \$38,069.92 |
| SEPT 1 89-18 9/1/2010 | (\$66,844.00) \$34,839.30 | PAVING 2ND AVE, 4TH ST, 5TH ST \$6,860.81 | 1171610 Sep 1/10 11.375% 1171610A | \$2,897.84 TOTAL | \$31,941.46 |
| SEPT 15 78-13 9/15/2004 | (\$270,000.00) \$53,263.04 | WATER MAIN REPLACEMENT \$30,895.92 | 1142827 Sep 15/04 10.5% | \$25,303.30 TOTAL | \$27,959.74 |
| OCT 1 85-5, 85-6 85-8 10/1/2005 | (\$250,460.04) \$77,145.26 | PAVING 1ST AVE 6TH ST \$31,912.59 | 1165042 Oct.01/05 11.625% 1165042A (NEW DEBENTURE NUMBER) | \$22,944.45 TOTAL | \$54,200.99 |
| | (\$913,361.04) \$219,350.99 PRINCIPAL | TOTAL PAID TO DATE IN 2003 PRINCIPLE \$67,179.06 INTEREST \$25,016.14 TOTAL \$92,195.20 | | GRAND TOTAL | \$152,171.93 ===== |

Debenture Balance December 31, 2002 \$219,350.99

Recap: Loan Maturing September 15, 2004
Two Loans June 1, 2005
 October 1, 2005
Last Loan September 1, 2010

OTHER OUTSTANDING LOANS

| MOUNTAIN VIEW CREDIT UNION | | | | |
|---|--------------------------------------|--------------------------------|------------------------------------|----------------------------|
| DESCRIPTION | OPENING BALANCE DECEMBER 31/02 | BALANCE AS OF NOVEMBER 2003 | TOTAL PRINCIPAL PAID THIS MONTH | NET OUTSTANDING BALANCE |
| LOAN #3 @ 6.60% SEWER LAGOON . | \$48,206.35 | \$44,217.75 | (\$378.27) | \$43,839.48 |
| LOAN #5 @ 6.60% 9 TH ST. STORM | \$47,362.13 | \$43,441.40 | (\$371.83) | \$43,069.57 |
| LOAN #7 @ 6.60% 1 ST AVE PHASE 1 | \$91,064.98 | \$83,984.50 | (\$675.95) | \$83,312.55 |
| LOAN #8 @ 5.50% 1 ST AVE. PHASE 2 | \$76,179.20 | \$70,483.14 | (\$508.14) | \$69,975.00 |
| LOAN #9 @ 5.85% BEACON HEIGHTS RD | \$0.00 | \$0.00 | \$0.00 | \$26,951.03 |
| LOAN #10 @ 5.85% RESTAURANT SERVICING | \$0.00 | \$0.00 | \$0.00 | \$30,067.97 |
| | \$265,007.09 | \$242,126.79 | (\$1,934.19) | \$297,214.60 |

Recap: Loan #3 Maturing June 1, 2011 (Next renewal date June 1, 2004)
Loan #5 Maturing June 1, 2011 (Next renewal date June 1, 2004)
Loan #7 Maturing December 1, 2011 (Next renewal date December 1, 2004)
Loan #8 Maturing December 4, 2012 (Next renewal date December 4, 2005)
Loan #9 Maturing December 1, 2008
Loan #10 Maturing January 1, 2009



VILLAGE OF BEISEKER

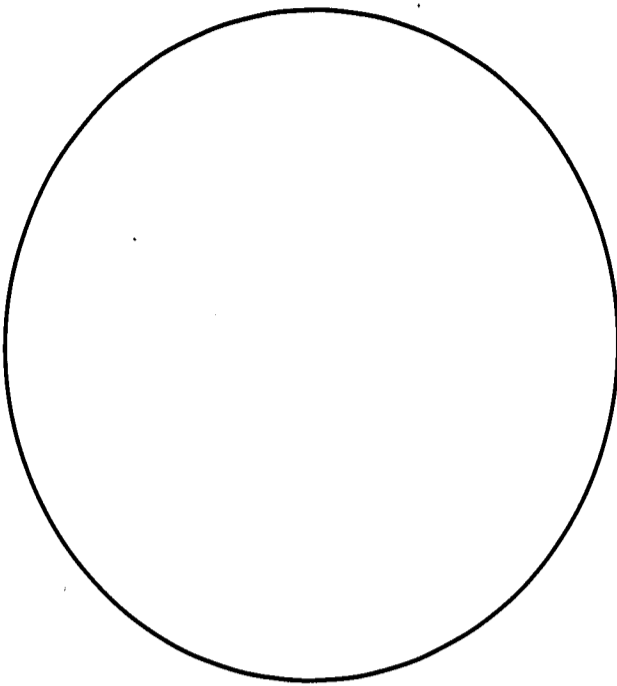
Outstanding Cheques

For the Period of

2002-01-01 and 2003-12-31

| Cheque | Date | Vendor Name | Replaced By | Batch | CEO | CAO | Amount |
|---------|------------|--|-------------|-------|-----|-----|------------------|
| 2692 | 2002-01-14 | ALBERTA LOCAL AUTHORITIES, RECIPROCAL I | | 2592 | | | 3,466.21 |
| 4854 | 2003-12-08 | LEDCOR ALBERTA LIMITED | | 4828 | | | 4,580.00 |
| 4864 | 2003-12-08 | SKUCE, CORWIN | | 4828 | | | 175.00 |
| 4884 | 2003-12-15 | HENDERSON, LADEAN | | 4860 | | | 424.50 |
| 4891 | 2003-12-15 | HENDERSON, LADEAN | | 4862 | | | 19.58 |
| 2003001 | 2003-12-22 | AIRDRIE & DISTRICT VICTIMS ASSISTANCE SO | | 4870 | | | 500.00 |
| 2003003 | 2003-12-22 | ALBERTA REGISTRIES | | 4870 | | | 50.45 |
| 2003004 | 2003-12-22 | ALL-CAN MEDICAL | | 4870 | | | 75.00 |
| 2003006 | 2003-12-22 | BEISEKER COMMUNITY SCHOOL, JUNIOR LEAD | | 4870 | | | 500.00 |
| 2003007 | 2003-12-22 | BEISEKER COMMUNITY SCHOOL, READING PR | | 4870 | | | 1,500.00 |
| 2003012 | 2003-12-22 | CANADIAN WASTE SERVICES INC. | | 4870 | | | 292.82 |
| 2003023 | 2003-12-22 | REGIONAL ASSESSMENT MANAGEMENT | | 4870 | | | 503.79 |
| 2003028 | 2003-12-22 | WESTERN CANADA FIRE & FIRST AID INC. | | 4870 | | | 535.00 |
| 2003033 | 2003-12-31 | BELL, MARY | | 4894 | | | 235.15 |
| 2003036 | 2003-12-31 | FREMAR ENTERPRISES | | 4894 | | | 198.00 |
| 2003037 | 2003-12-31 | HAGEL, IRENE | | 4894 | | | 83.86 |
| 2003038 | 2003-12-31 | HENDERSON, LADEAN | | 4894 | | | 370.70 |
| 2003041 | 2003-12-31 | SCOTT, DOUG | | 4894 | | | 886.45 |
| 2003043 | 2003-12-31 | WATSON, AUGGIE | | 4894 | | | 540.74 |
| 2003044 | 2003-12-31 | WELLS, DALE | | 4894 | | | 1,654.43 |
| | | | | | | | 16,591.68 |

IMAGE EVALUATION TEST TARGET (MT-2)



150mm

6"

POINT SIZE

4 Z35q 1pb7 Y08i Zi0d
6 Hq47j W9pa9 A7o7q Ge92
8 Su1xi 33q7n Oelvf 4ef8k

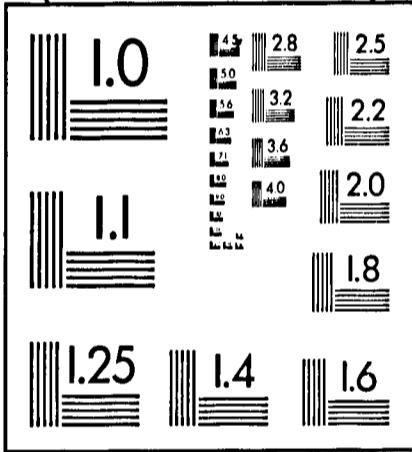
10 2xbiy Gmn0c
Y5a5o E1t9g
12 7n34a K2b8t
D6fmh 9ss9d
14 Wcuzl L1cdg
6Y3sl Okjdg

FUTURA

NEWS GOTHIC
14 K2b8t Okjdg
4ef8k Gmn0c
12 Zl06x Ge92
7n34a 6Y3sl

10 Y0r8j A7o7q
Oelvf 2xbiy
8 9ss9d L1cdg
33q7n E1t9g
6 Z35ig Hq47j Su1xi Y5a5
4 D6fmhWcuzl 1pb7 W9pa9

POINT SIZE



4 Jk110 Aruld Oz3p9 Gm7ac BkxIP
6 IZC68 U5M7P Pn6SB OIKOG
8 XMBBO HWEKH XYAHQ SIDDS
10 VILNU MZHSF XMBBO HWEKH
C6Jfm Zm79a 3s43l iskrY I26FRKM EB7AU FUDWM BOONF
Oz7h9B5e1P Wo8nk 8tizxI4C9E83 B18AJ Z7QYI OKJDQ

SERIF (BASKERVILLE) SIZE SANS SERIF (MICROFONT)

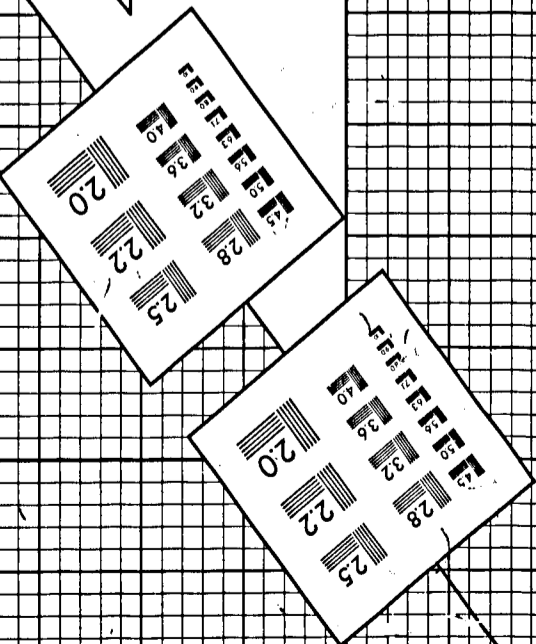
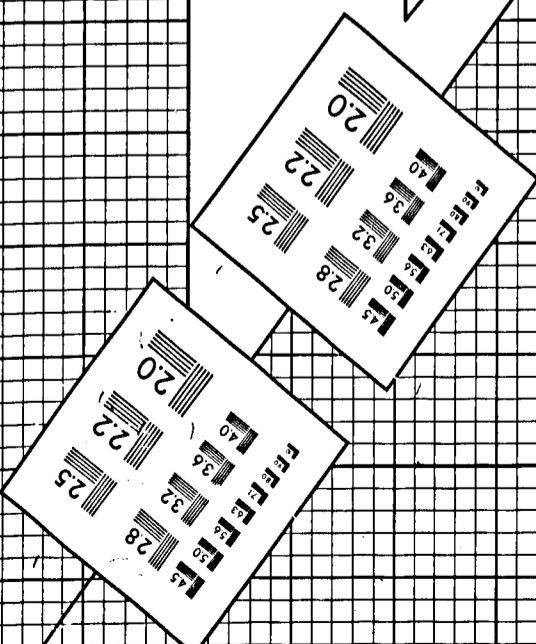
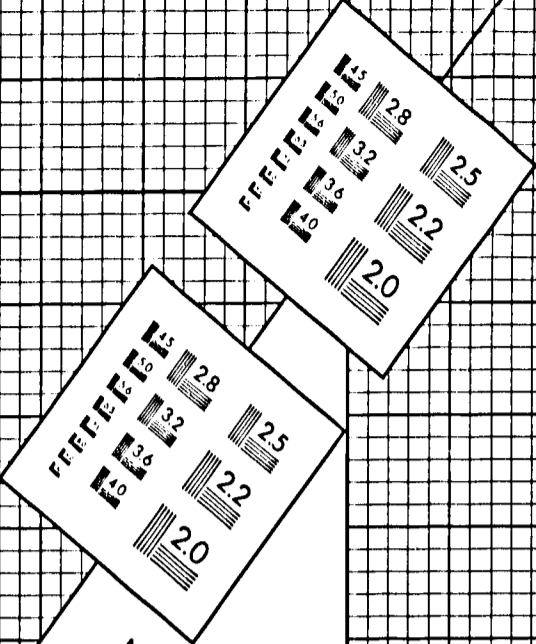
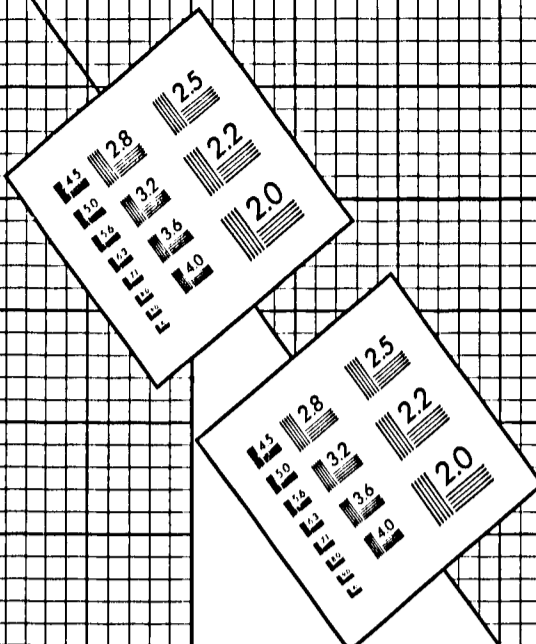
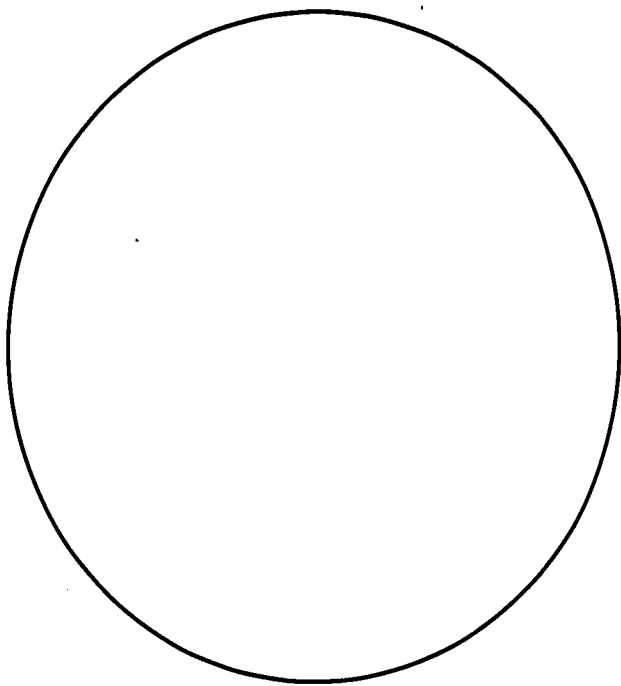


IMAGE EVALUATION TEST TARGET (MT-2)



POINT SIZE

4 Z35lg 1yb7 YO-B; Zloda
6 Hg47j W9pa9 A7o7q Ge92
8 Su1xi 33q7n Oelvf 4ef8k

10 2xbiy Gmn0c
Y5a5o E1t9g

12 7n34a K2b8t
D6fmh 9ss9d

14 Wcuzl L1cdg
6Y3sl Okjdg

FUTURA

NEWS GOTHIC

14 K2b8t Okjdg
4ef8k Gmn0c

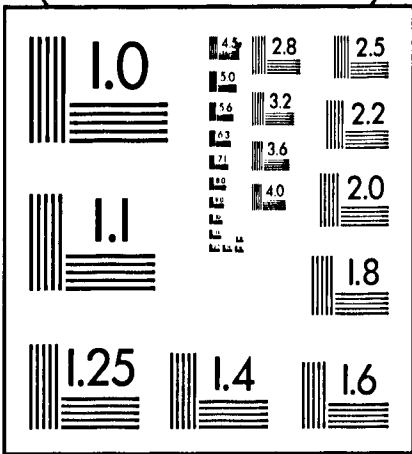
12 Zlo6x Ge92
7n34a 6Y3sl

10 Y0r8j A7o7q
Oelvf 2xbiy

8 9ss9d L1cdg
33q7n E1t9g

6 Z35lg Hq47j Su1xi Y5a5
4 D6fmh Wcuzl 1yb7 W9pa9

POINT SIZE



4 Jk110 Avubd O7389 Gm7ze Bkx1P
6 8t1zx Wo8nk C6Jfm Zm79a

8 TlwHz zh9oz bunYr Dm5z5
10 KP7Yc Rho9t Umkh9 Eeafd

12 C6Jfm Zm79a 3s43l iskrY I26FRKM EB7AU FUDWM B00NF
14 Oz7h9 B5e1P Wo8nk 8t1zx I4C9E83 B18AJ Z7QYI OKJDDG

4 CJTMO NZAUS BFKCU ZLCO IZC6B

6 IZC6B U5M7P PN6SB OIKOG

8 XMBBO HWEKH XYAHQ SIDDS

10 VILNU MZHSF XMBBO HWEKH

12 C6Jfm Zm79a 3s43l iskrY I26FRKM EB7AU FUDWM B00NF

14 Oz7h9 B5e1P Wo8nk 8t1zx I4C9E83 B18AJ Z7QYI OKJDDG

POINT
SERIF (BASKERVILLE) SIZE SANS SERIF (MICROFONT)

150mm

6"



APPLIED IMAGE, Inc

1653 East Main Street
Rochester, New York 14609

VILLAGE OF BEISEKER

END FILM