

# MONTHLY STATEMENT

Month Ending December 31 1998

Municipality of VILLAGE OF BEISEKER

	General Account		TOTAL	
Net Balance at End of Previous Month	28,835	79		
Receipts for the Month (Less Loans)	90,672	45		
<b>Sub-Total</b>	<b>119,508</b>	<b>24</b>		
<b>LESS:—</b>				
Disbursements for the Month	192,886	00		
Net Balance at End of Month	(73,377)	76)		
Balance at End of Month—Bank	(83,896)	62)		
O/S DEPOSITS	22,502	22		
*Cash on Hand at End of Month	100	00		
<b>Sub-Total</b>	<b>(61,294)</b>	<b>40)</b>		
Less Outstanding Cheques	12,083	36		
Net Balance at End of Month	(73,377)	76)		

OUTSTANDING CHEQUES					OUTSTANDING ACCOUNTS PAYABLE	
No.	Amount	No.	Amount	No.	Amount	Amount
1954	450.00	4116	324.69			
2453	14.51	4117	1,013.39			
2944	28.92	4118	1,313.56			
4033	24.00	4119	18.19			
4035	9.58	4120	1,579.46			
4056	33.11	4121	28.84			
4065	137.00	4122	803.81			
4082	490.41	4123	104.33			
4089	45.45	4124	446.77			
4090	65.00	4125	329.35			
4107	261.31	4126	132.15			
4108	95.00	4127	79.18			
4109	19.26	4128	664.20			
4110	2,140.00	4129	48.40			
4111	135.21	4130	74.21			
4112	733.92	4131	65.00			
4113	118.77	4139	76.45			
4115	65.00	4140	114.93			
<b>TOTAL</b>				12,083.36	<b>TOTAL</b>	
					Estimate of Accounts Payable, not rendered	

This Statement Submitted to Council this 11TH day of January 1999

Remarks:

*Alan Jegan*  
 \_\_\_\_\_  
 Mayor

**VILLAGE OF BEISEKER  
OUTSTANDING DEBENTURES 1997  
AS AT DECEMBER 31, 1998**

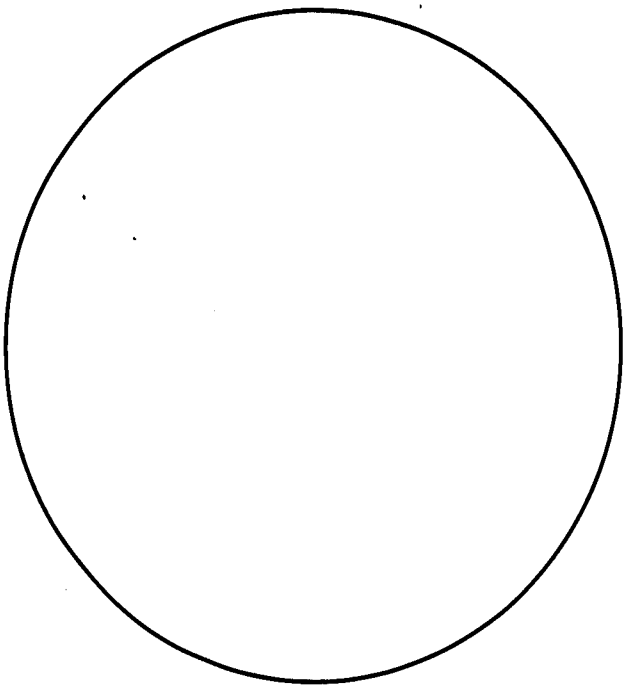
DATE/ BYLAW NUMBERS MATUR- ITY DATE	(ORIGINAL AMOUNT)/ BALANCE FORWARD FROM 1997	PROJECT AMOUNT PAID IN 1998	NUMBER DATE RATE	AMOUNT REMAINING	BALANCE TOTAL DEBENTURE
JUNE 1  78-27, 79-8 80-4, 80-5 80-19 6/1/2005	(\$272,000.00)     111900.47	WMR & RESERVOIR \$19,687.62  LIFT STATION \$2,838.26	1146265  June 1/05 12.5%	\$89,849.52  \$12,953.13 <b>TOTAL</b>	     <b>\$102,802.65</b>
JUNE 15  91-9 6/15/2002	(\$54,057.00)  32,837.08	SEWER LIFT STATION '92  \$8,469.57	1174028 June 15/02 9.125%	\$27,363.89 <b>TOTAL</b>	     <b>\$27,363.89</b>
SEPT 1  89-18 9/1/2010 DEC 10	(\$66,844.00)  45449.15	PAVING 2ND AVE, 4TH ST, 5TH ST \$6,860.81	1171610 Sep 1/10 11.375% 1171610A	\$43,758.18 <b>TOTAL</b>	     <b>\$43,758.18</b>
SEPT 15  78-13 9/15/2004	(\$270,000.00)  147969.71	WATER MAIN REPLACEMENT \$30,895.92	1142827 Sep 15/04 10.5%	\$132,610.61 <b>TOTAL</b>	     <b>\$132,610.61</b>
OCT 1  85-5, 85-6 85-8 10/1/2005	(\$250,460.04)  160,629.05	PAVING 1ST AVE 6TH ST \$31,912.59	1165042 May 10/01 11.625% 1165042A (NEW DEBENTURE NUMBER)	\$147,389.59 <b>TOTAL</b>	     <b>\$147,389.59</b>
	(\$913,361.04)  \$498,785.46 PRINCIPAL	TOTAL PAID TO DATE IN 1998 PRINCIPLE \$44,860.54 INTEREST \$55,804.23 TOTAL \$100,664.77		GRAND TOTAL	     <b>\$453,924.92</b>

Debenture Balance December 31, 1997 \$498,785.46

Recap: Loan Maturing            June 15, 2002  
Next Loan                        September 15, 2004  
Two Loans                        June 1, 2005  
    October 1, 2005  
Last Loan                         September 1, 2010



# IMAGE EVALUATION TEST TARGET (MT-2)



150mm

6"

## POINT SIZE

4 23lg 1jb7 YO-8j Zlo6x  
 6 Hg47j W9pa9 A7o7q Ge92  
 8 Su1xi 33q7n Oelvf 4ef8k

10 2xbiy Gmn0c  
 Y5a5o E1t9g

12 7n34a K2b8t  
 D6fmh 9ss9d

14 Wcuzl L1cdg  
 6Y3sl Okjdg

### FUTURA

## NEWS GOTHIC

14 K2b8t Okjdg  
 4ef8k Gmn0c

12 Zlo6x Ge92  
 7n34a 6Y3sl

10 Y0r8j A7o7q  
 Oelvf 2xbiy

8 9ss9d L1cdg  
 33q7n E1t9g

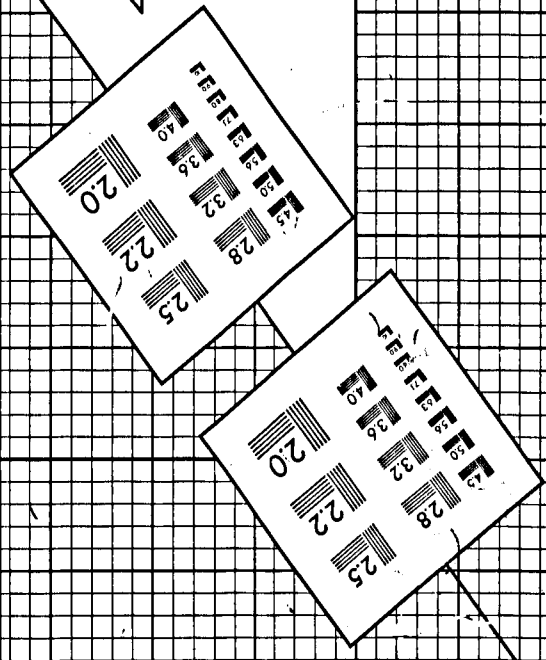
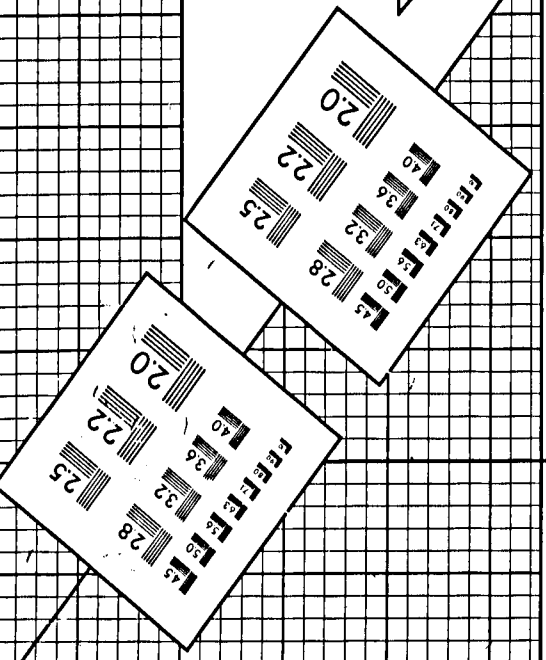
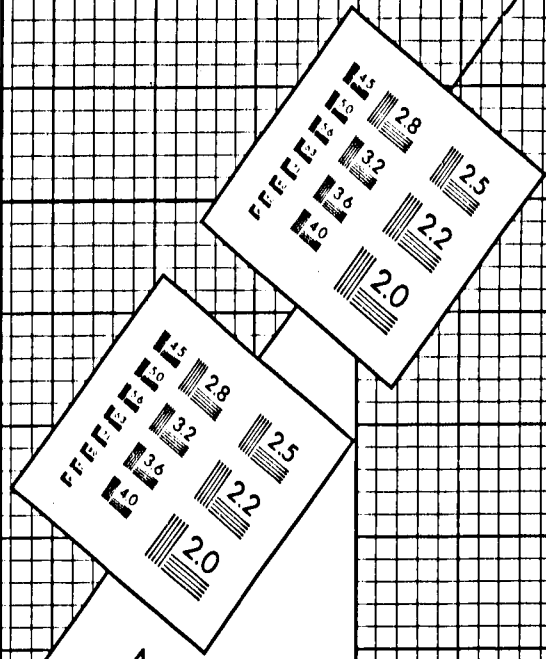
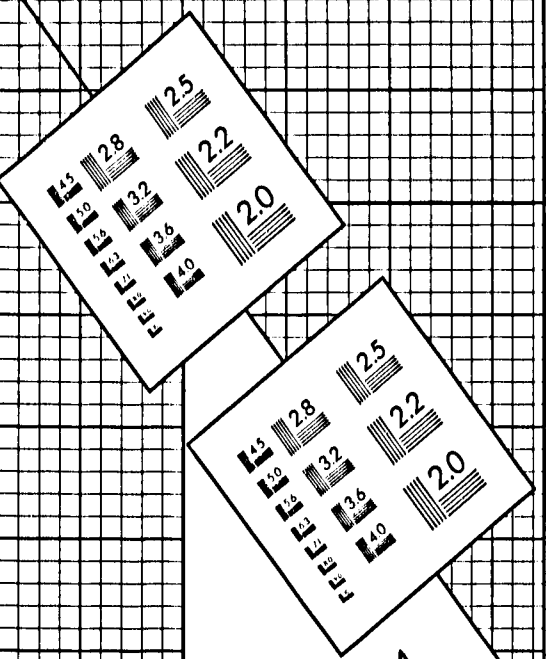
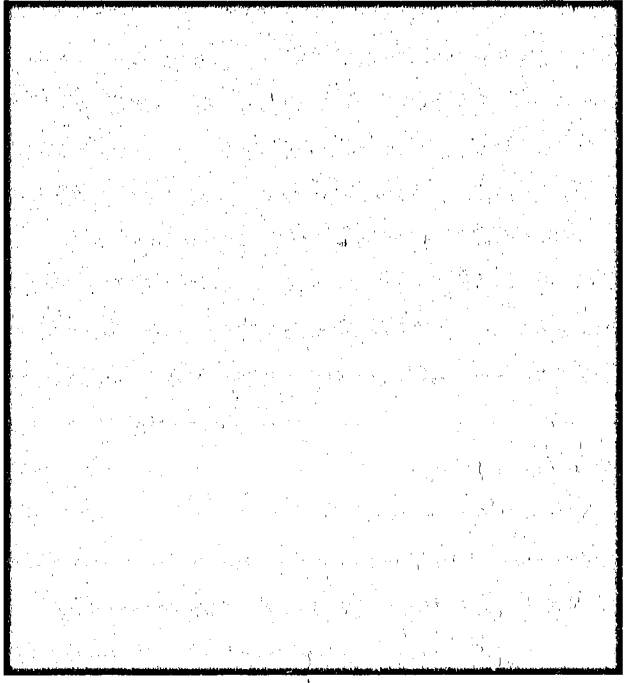
4 235lg Hq47j Su1xi Y5a5  
 D6fmh Wcuzl 1jb7 W9pa9

## POINT SIZE

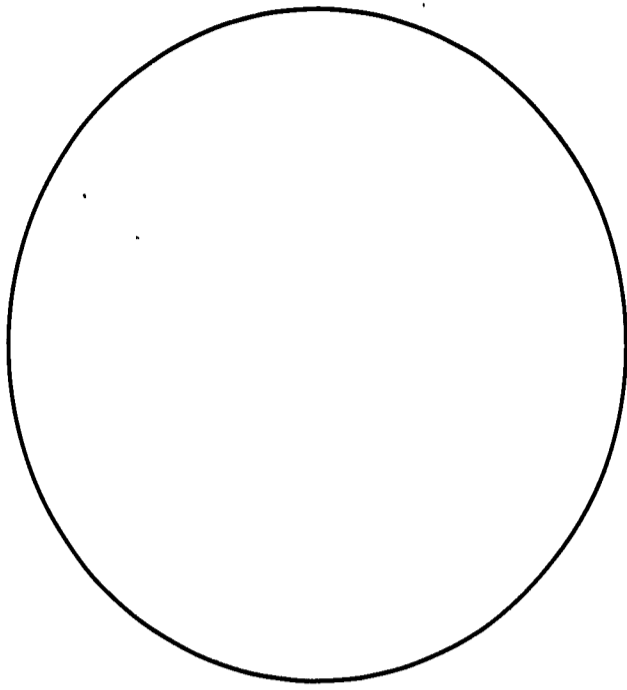
1.0	2.8	2.5
1.1	3.2	2.2
1.25	3.6	2.0
1.4	4.0	1.8
1.6		

4 Jk110 Arabid Oz7h9 Ga7ac B5e1P  
 6 IZC6B U5M7P PN6SB 01K0G  
 8 XMBBO HWEKH XYAHQ SIDDS  
 10 VILNU MZHSF XMBBO HWEKH  
 12 6Jfm Zm79a 3s43l iskrY I26FRKM EB7AU FUDWM BOONF  
 14 Oz7h9 B5e1P Wo8nk 8tizx I4C9E83 B18AJ Z7QYI OKJDQ

## SERIF (BASKERVILLE) SIZE SANS SERIF (MICROFONT)



# IMAGE EVALUATION TEST TARGET (MT-2)



150mm

## POINT SIZE

4 Z35lg 1jb7 10-8j Zlo6x  
6 Hg47j W9pa9 A7o7q Ge92  
8 Su1xi 33q7n Oelvf 4ef8k

10 2xbiy Gmn0c  
Y5a5o E1t9g

12 7n34a K2b8t  
D6fmh 9ss9d

14 Wcuzl L1cdg  
6Y3sl Okjdg

## FUTURA

## NEWS GOTHIC

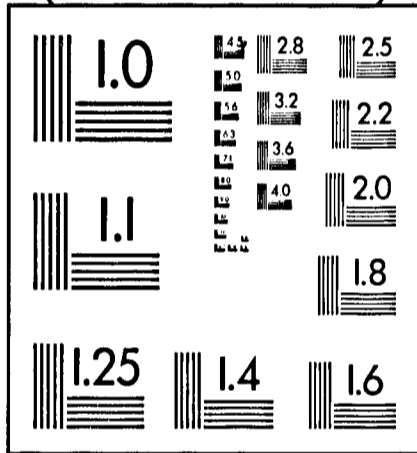
14 K2b8t Okjdg  
4ef8k Gmn0c

12 Zlo6x Ge92  
7n34a 6Y3sl

10 Y0r8j A7o7q  
Oelvf 2xbiy  
8 9ss9d L1cdg  
6 33q7n E1t9g  
4 Z35lg Hq47j Su1xi Y5a5

D6lmhWcuzl 1jb7 W9pa9

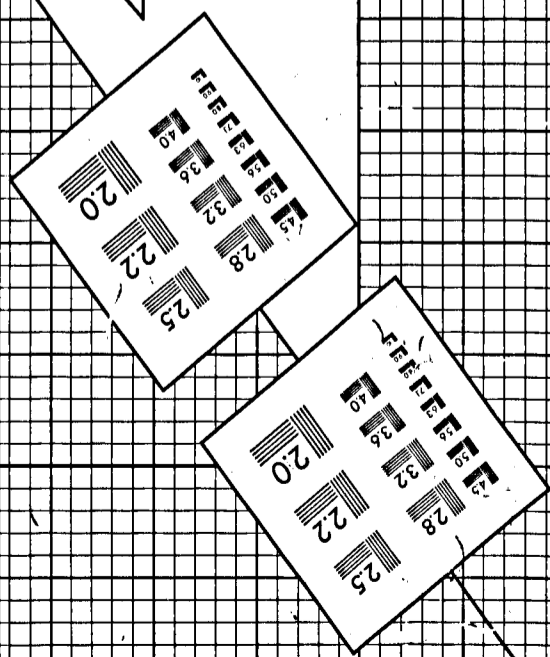
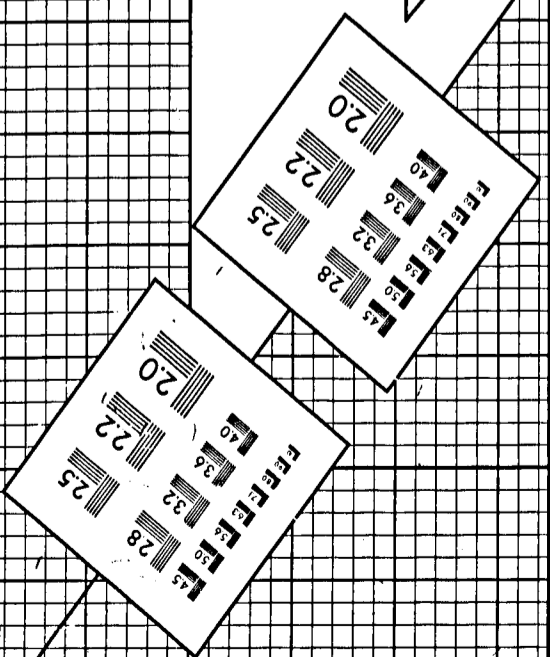
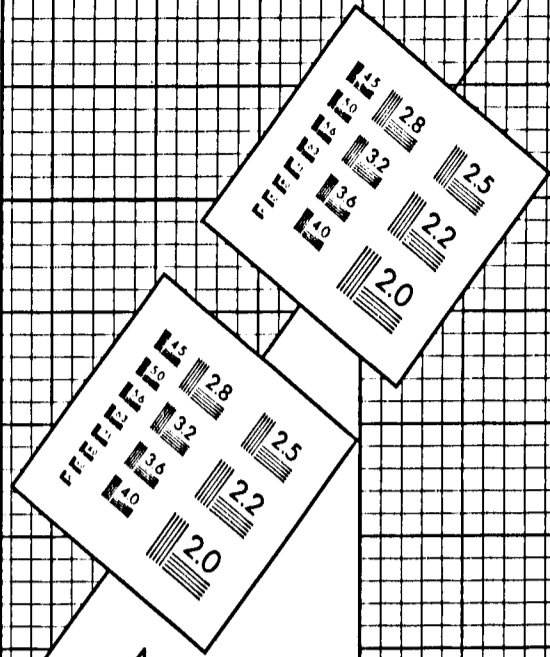
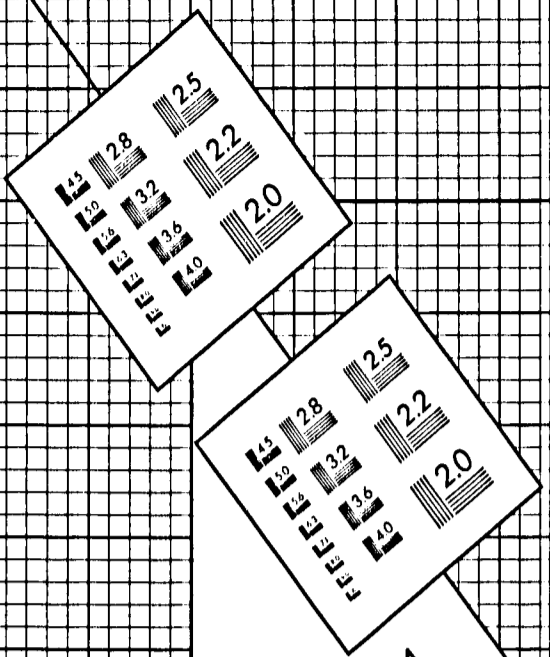
## POINT SIZE



4 Jfr10 Auuhd Oz7h9 Gm7ac BxclP  
6 Rtrzx Wo8nk C6Jfm Zm79a  
8 Tlw2 2h9oz bunYr Dm325  
10 KP7Yc Rho9t Umkh9 Eeafd  
12 C6Jfm Zm79a, 3s43l iskrY I26FRKM EB7AU FUDWM BOONF  
14 Oz7h9 B5e1P Wo8nk 8tizx I4C9E83 B18AJ Z7QYI OKJDQ

## SERIF (BASKERVILLE) SIZE SANS SERIF (MICROFONT)

6"



APPLIED IMAGE, Inc

1653 East Main Street  
Rochester, New York 14609

**VILLAGE OF BEISEKER**

**END FILM**